

Barnardos Workplace Giving Employer how to guide

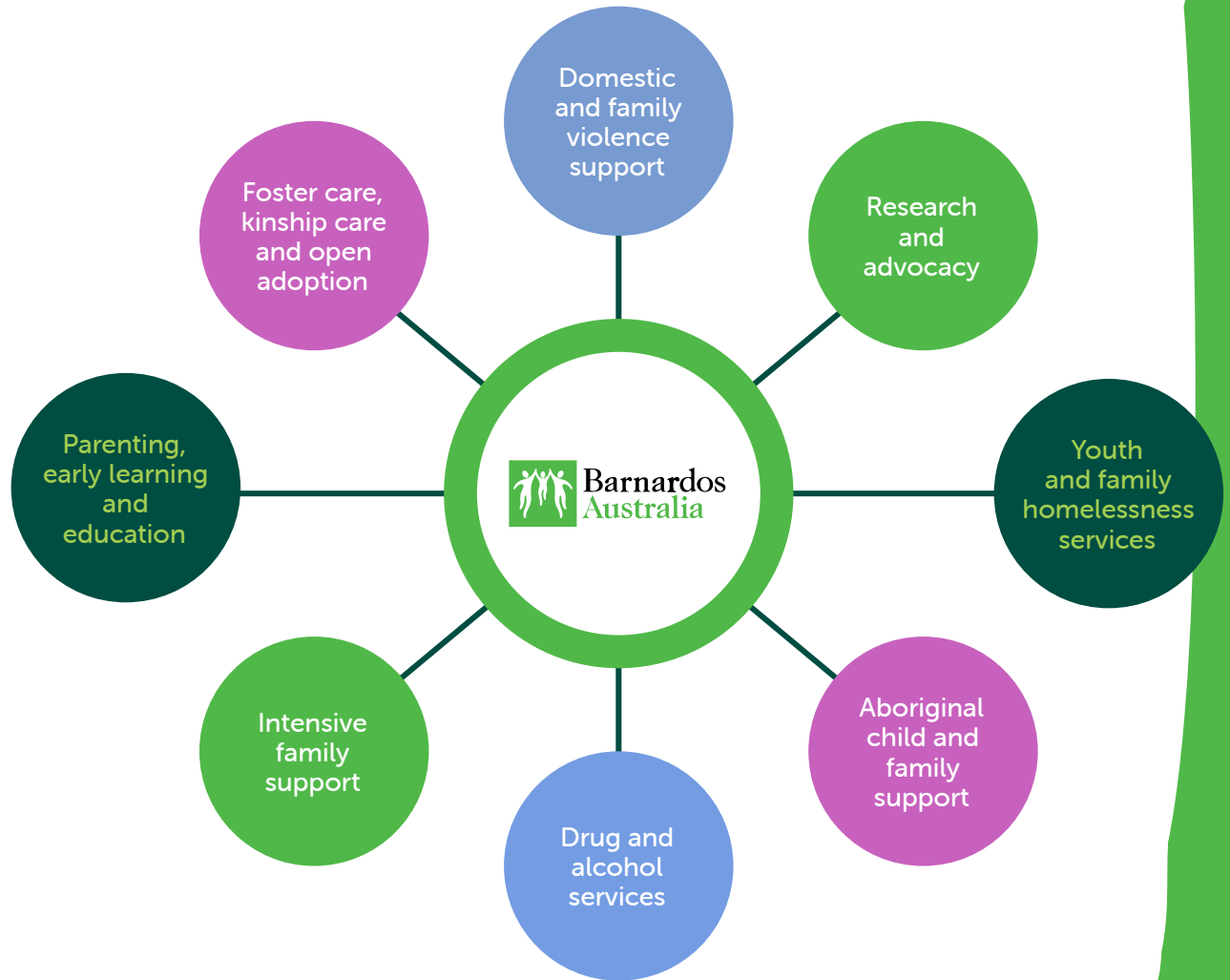


About Barnardos Australia

At Barnardos, our vision is for all children and young people to have caring families, where they can grow up safely and fulfil their potential.

Every year we work with thousands of families experiencing poverty, homelessness, violence, drugs and mental health issues to help rebuild their lives and keep their children safe from abuse and neglect.

But we can't do this without your help...





Did you know?

**In Australia
one child dies
every two weeks
as a result of
abuse or neglect.**

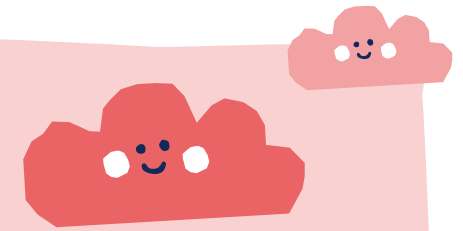
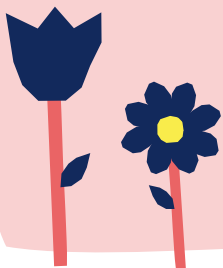
Australian Bureau of Statistics 2016

What is Workplace Giving?

Workplace Giving is the opportunity to make a regular, pre-tax donation to charity every pay day.

It allows you to support more children in Barnardos programs directly from your payroll, plus you receive an immediate pre-tax benefit while the charity receives the full donation amount.

For example, if you donate \$20 per pay cycle, it will only cost you \$12.60* but Barnardos will receive the full \$20.



A little goes a long way every pay...



\$2 per pay

Essential items for children in need.

Sadly, children often come to us with nothing but the clothes on their back. A gift from you can help provide a vulnerable child with everyday essentials like new clothes, books and toys to call their own.



\$5 per pay

Support for a mother who has escaped domestic violence.

Your regular donation can help a struggling mother and her child receive vital support to regain their lives and begin to heal from the trauma of domestic violence.



\$20 per pay

Medical support and ongoing check-ups.

As soon as a neglected child comes into Barnardos' care, we organise a physician to assess their health needs. Your regular gift can help provide medical support like dental care for a child whose teeth have rotted, glasses or hearing aids, and ongoing check-ups.



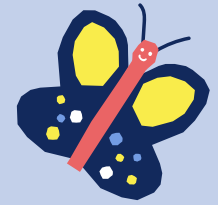
\$50 per pay

Access to crisis accommodation.

A generous \$50 per pay day can help give a mother and her child access to one of our crisis accommodation units for a month - providing them with a safe and secure place to call home.

*Please note these figures are based on 26 annual pay cycles (fortnightly pay)

Workplace Giving benefits



For the employer

- Proven greater staff **engagement**.
- **76% of millennials** consider a company's social and environmental commitments before **deciding where to work**.
- Access to **unique** and **inspiring** Barnardos corporate engagement opportunities.

For the employee

- **Easy, cost-effective** and one of the smartest ways to donate to charity.
- Donations have **more impact pre-tax**, without additional costs to the donor
- No need to save receipts for tax time!
- Donations may be **doubled or tripled** by corporate employer.

For the charity

"Workplace giving responds to one of the most significant fundraising challenges faced by charities today – finding **stable** and **low-cost sources** of funding."

- Workplace Giving Australia.

Engaging your employees

What makes Workplace Giving different at Barnardos?

We know that your employees are integral to your success. As part of the Barnardos Australia Workplace Giving program, we offer participating companies access to a variety of corporate engagement opportunities*.

Renovation rescue / working bees

The chance for your employees to use their expert skills to help Barnardos transform one of our centres.

Day out with the kids

Take the kids from our programs on a fun day out to the zoo, the cinema or other fun activity.

Volunteering

Help us at our bi-annual Op Shop, paint children's faces at the Christmas in Pyrmont community event or run a water station at the Blackmores Running Festival.

Events

Encourage staff to get active and train for Sydney's iconic City2Surf running event, while fundraising for Barnardos.

Employee fundraising

Your dedicated Partnership Manager will inspire you with all the information and ideas you'll need to organise a fundraising activity.

*Barnardos Australia is committed to delivering our essential services to support vulnerable children and families whilst adhering to COVID-19 safe guidelines. Barnardos places the highest priority on the health and safety of all staff, volunteers, and the children and families to whom we provide services and care.

Implementing Workplace Giving

Here is an overview of what's involved when implementing a successful Workplace Giving program at your organisation. We would be delighted to assist you with the set up, including: producing collateral, developing a communication schedule and presenting to staff about the vital work we do. Workplace Giving Australia also has a wealth of resources to help you get started. For assistance please email payrollgiving@barnardos.org.au.





Workplace Giving platforms

There are a number of specialist online platforms to choose from that can help employers with their Workplace Giving platform:



To set up your own your workplace giving program visit Workplace Giving Australia to download the free DIY Guide as well as helpful tips and resources.



We also recognise that our supporters want to know how their donations are impacting lives. Employees and other corporate contacts can be added to our regular Workplace Giving e-newsletter, which provides ongoing content, employee touch points including inspiring case studies, volunteering and fundraising opportunities!

Promoting Workplace Giving

Here are some great tips on how to promote your internal Workplace Giving program to employees.

Spread the word

- Share on your intranet
- Send a staff email
- Announce at staff meetings
- Place posters in your common areas

Offer dollar matching

- Show company commitment by matching dollar-for-dollar on employee donations

Demonstrate support

- Have your CEO and executive members join the program and then ask others to do the same



How employees get involved

Workplace Giving provides donors with a practical way to support Barnardos that is quick, easy and makes a real difference to the lives of vulnerable children in Australia.

1 Employees choose the amount they wish to donate

2 Employees complete the Workplace Giving Sign Up Form

3 Employees send form to payroll for processing

Workplace Giving is one of the most generous acts you can do to help us stop the abuse of Australian children.

Your ongoing gift will support vulnerable children to recover and thrive. Together we can ensure they reach their brightest future.

What is Workplace Giving?

Workplace Giving is the opportunity to make a regular, pre-tax donation to charity every pay day.

It allows you to support more children in Barnardos programs directly from your payroll, plus you receive an immediate pre-tax benefit while the charity receives the full donation amount.

For example, if you donate \$20 per pay cycle, it will only cost you \$12.60* but Barnardos will receive the full \$20.

A little goes a long way every pay...

- \$2 per pay** - Enough items for children in need.
 *Sally, a young girl, comes to us every week looking for the clothes on their back. A gift from you can help provide a comfortable and well-kept wardrobe like new clothes, shoes and toys for all their own.
- \$5 per pay** - Support for a mother who has changed her home address.
 *The regular donations you make are a shopping list and for shop vouchers and help to fight their pain and begin to heal from the trauma of domestic violence.
- \$20 per pay** - Medical support and ongoing check-ups.
 *As soon as a neglected child comes into Barnardos Care we organise a physician to assess their health needs. Your regular gift can help provide medical support like dental care for a child whose teeth have rotted, glasses or hearing aids, and ongoing check-ups.
- \$50 per pay** - Access to legal accommodations.
 *A generous \$50 per pay can help get a mother and her child access to one of our crisis accommodation units for a month - providing them with a safe and secure place to call home.

*Please note: State, Territory and Federal Income Tax Rates (1/1/20) are used for this illustration.

Workplace Giving registration form

I would like to make a difference to the lives of Australian children by registering for Workplace Giving with Barnardos Australia. I understand that this is an automated donation from my pay and can be amended at any time.

I would like to advise Barnardos that each pay I will be donating: (please tick)

\$10 \$20 \$30 Other \$ _____

My details:

First name	Surname
Email	
Mobile	

Deduction start date I would like my donations to commence next pay period.
 I would like my donations to begin from: ____/____/____

Signature _____
 Date _____

Return this form to your payroll department once completed.



Thank you 
for supporting
Australian children.

For more information:

Email payrollgiving@barnardos.org.au or visit ato.gov.au/non-profit/gifts-and-fundraising/workplace-and-business-support/workplace-giving-and-salary-sacrifice-arrangements.

ABN 18 068 557 906 | A Company Limited by Guarantee | Registered Charity | HO_CORP_20_00132

1800 061 000
barnardos.org.au

